



April 15th 2017

9:00 – 11:30

Attendance

Barbara, Brian, Ed, Frank, Helena, Kade, Noel, Ronnie, Regina, Robyn, Subas, and Trevor



Meeting Agenda

- Urban nature proposed program for activity days
 - Upcoming Wednesday-walks

Morning Activities

- Rubbish Clean-up
- Wildlife Photography



Mysterious diggings near the entrance...we suspect that it could be Gould's Goanna!



This factsheet on Gould's Goanna is from DEC (2012) website. So, let's watch out for these majestic reptiles!



Photo: Babs and Bert Wells/DEC

Size

Up to 1.6 m total length, average 1m.

Weight

Males up to three times size of females, can weigh 7kg.

Gould's Goanna *Varanus gouldii* (Gray, 1838)

Distribution

Occurs in most parts of Australia except the far south-east and forests of the east coast which experience high rainfall.

For further information regarding the distribution of this species please refer to www.naturemap.dpaw.wa.gov.au

Habitat

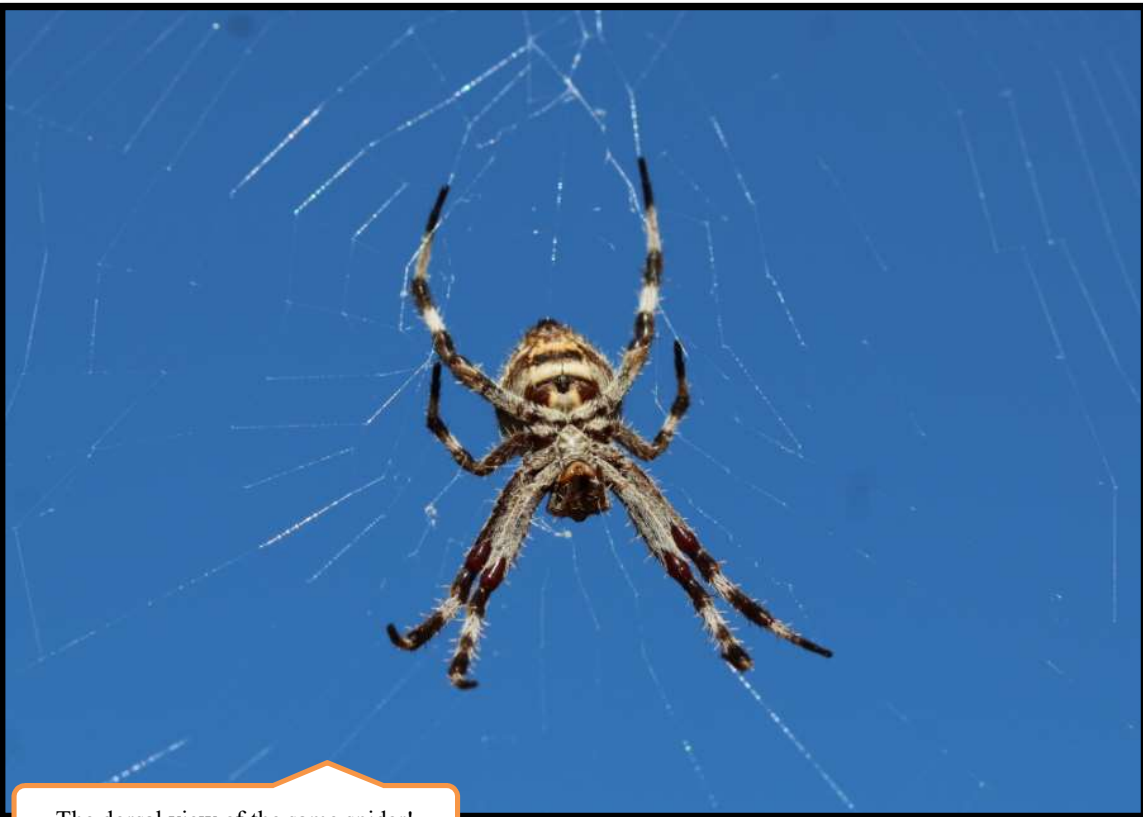
In Western Australia, it is common on the Swan Coastal Plain in most habitat types, with a preference for sandy soils in open woodlands. Less common in jarrah woodlands of Darling Range. Elsewhere in Australia, they are found in coastal sclerophyll forests and sandy deserts.

Behaviour

Gould's Goanna is a day-active, ground-dwelling reptile. They burrow beneath slabs of rock, beneath rubbish piles, hollow logs or dense litter. Large individuals will often raise themselves by their hind legs and tail to view their surroundings, or when threatened.



The colourful legs of Garden Orb-Weaver Spider lights up against the Sun (frontal view)



The dorsal view of the same spider!



A very well camouflaged juvenile Gecko on a dying tree. Not sure about the species!



This Skink had a missing tail and a chopped up left palm – but was a quick mover regardless!





I was fascinated by the patterns of tunnels on this tree— but got even more excited when this native cockroach popped up from nowhere!

